

# FIGURES

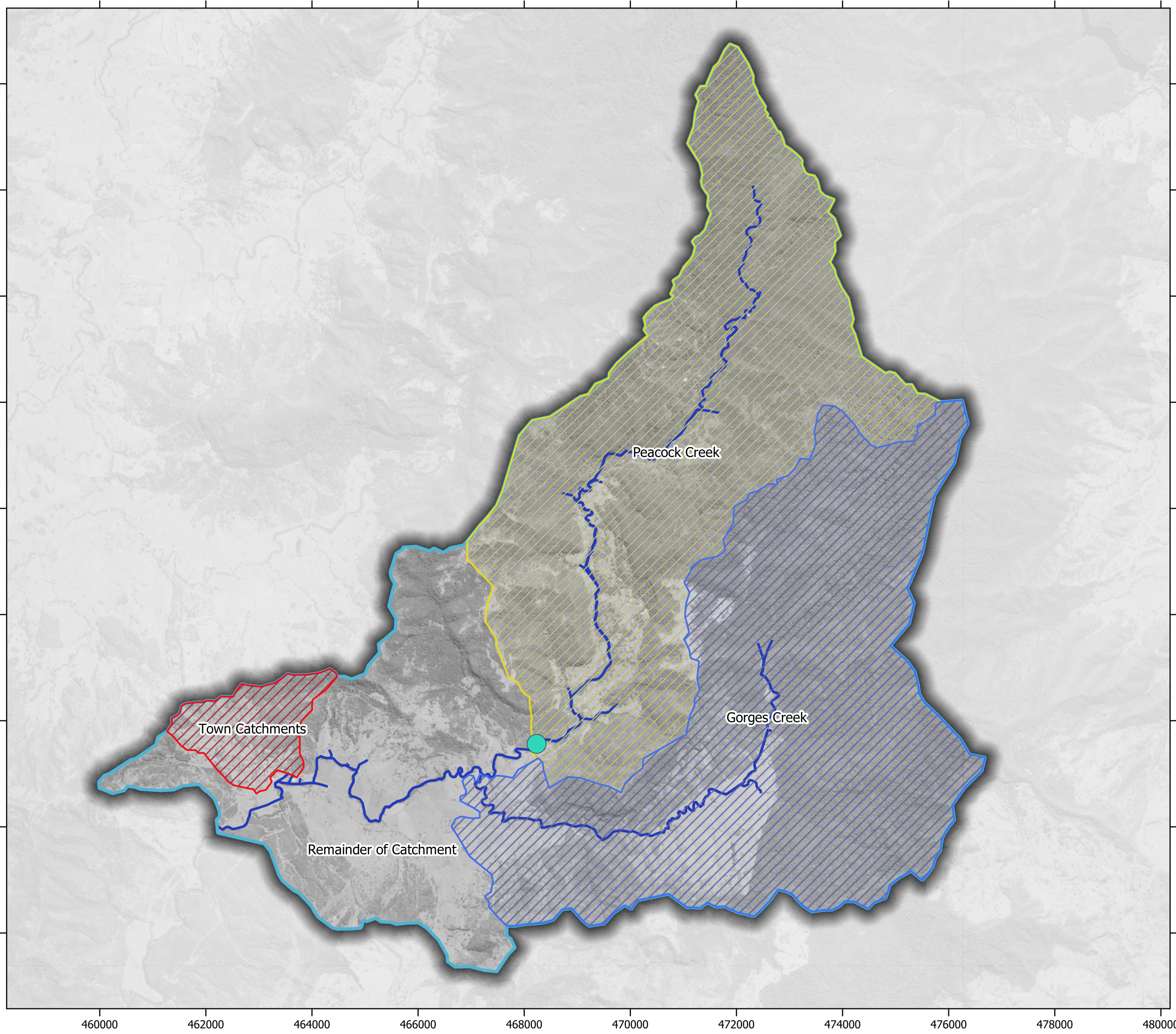
Figure A 1: Catchment Plan

Figure A 2: Topographic Plan

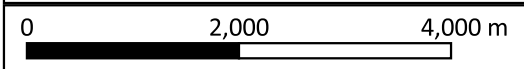
Figure A 3: Rainfall and River Gauges

Figure A 4: Hydrology Model Layout

Figure A 5: Hydraulic Model Layout



- ### Legend
- Catchments**
- Town Catchments
  - Peacock Creek
  - Remainder of Catchment
  - Gorges Creek
- Stream Paths**
- Stream Paths
- Peacock Creek Gauge**
- Discharge / Water Level



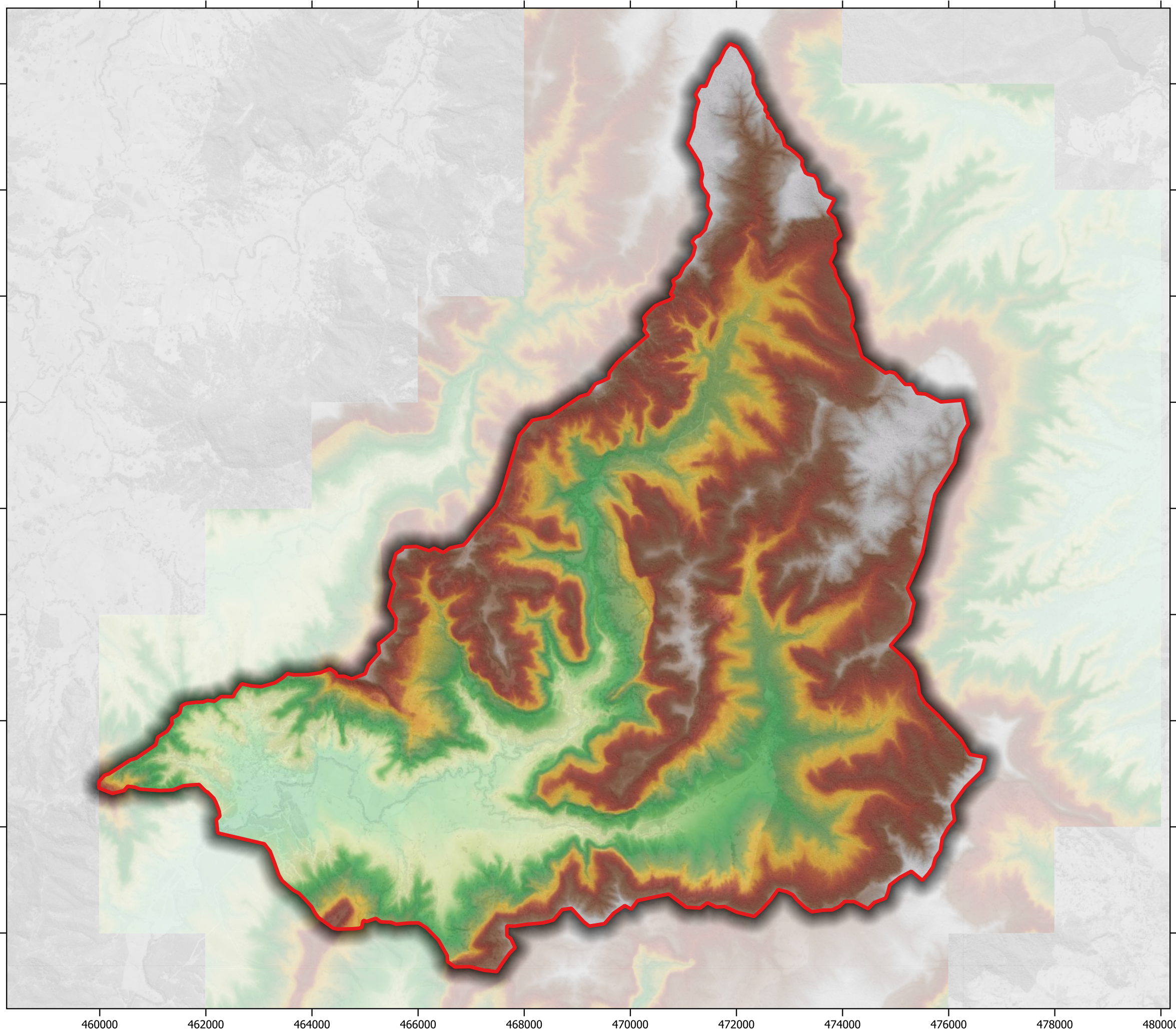
DRAWN: SM  
 REVIEWED: LB  
 APPROVED: LB

DATE: 28/6/2021  
 PROJECT: Bonalbo Flood Study  
 CLIENT: Kyogle Council

Figure A-1  
 Catchment Plan

**PUBLIC EXHIBITION DRAFT**

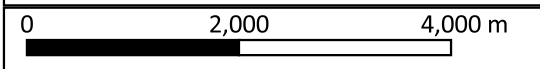
DATUM: GDA2020 / MGA zone 56



**Legend**

- Catchment
- Elevation (mAHD)
- 170
- 260
- 340
- 430
- 510
- 600
- 293.3
- 313.0
- 332.8
- 352.5
- 372.3
- 392.0
- 411.8
- 431.5
- 451.3
- 471.0
- 490.8
- 510.5
- 530.3
- 550.0

6834000  
6832000  
6830000  
6828000  
6826000  
6824000  
6822000  
6820000  
6818000



DRAWN: SM  
REVIEWED: LB  
APPROVED: LB  
  
DATE: 28/6/2021  
PROJECT: Bonalbo Flood Study  
CLIENT: Kyogle Council



Figure A-2  
Topographic Plan

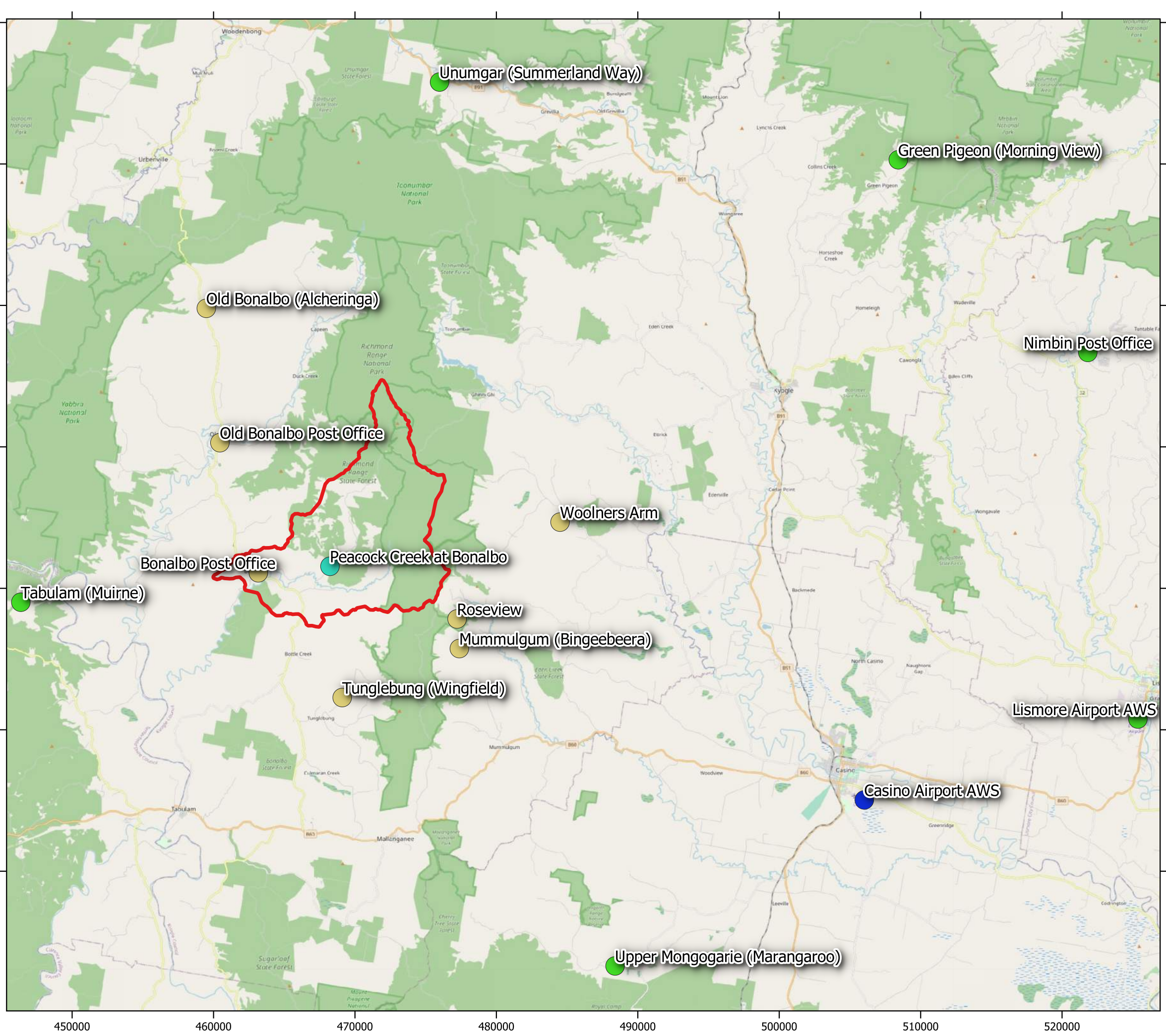
**PUBLIC EXHIBITION DRAFT**

DATUM: GDA2020 / MGA zone 56

Disclaimer: This map is current at the time of publication and has been prepared, in part, from unverified data and information (Data) supplied by other parties. Whilst BG&E takes due care in providing its services, BG&E accepts no liability for any loss or damage suffered which is caused by any inaccuracy in the design or drawing which has resulted from the use of any unverified, inaccurate or misleading Data supplied by other parties.  
P:\BGE\SYD\S20095\100 Draw\Figures\BO\_FS\_Figures\_AppendixA\_A.qgz \ Appendix A2

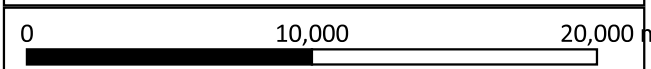
Aerial Imagery Source: SIXmaps

460000 462000 464000 466000 468000 470000 472000 474000 476000 478000 480000



### Legend

- Catchment
- Gauge Locations**
- Discharge / Water Level
- Minutely Rainfall
- Pluviograph
- Daily Rainfall



DRAWN: SM  
 REVIEWED: LB  
 APPROVED: LB  
  
 DATE: 28/6/2021  
 PROJECT: Bonalbo Flood Study  
 CLIENT: Kyogle Council



Figure A-3  
Rainfall and River Gauges

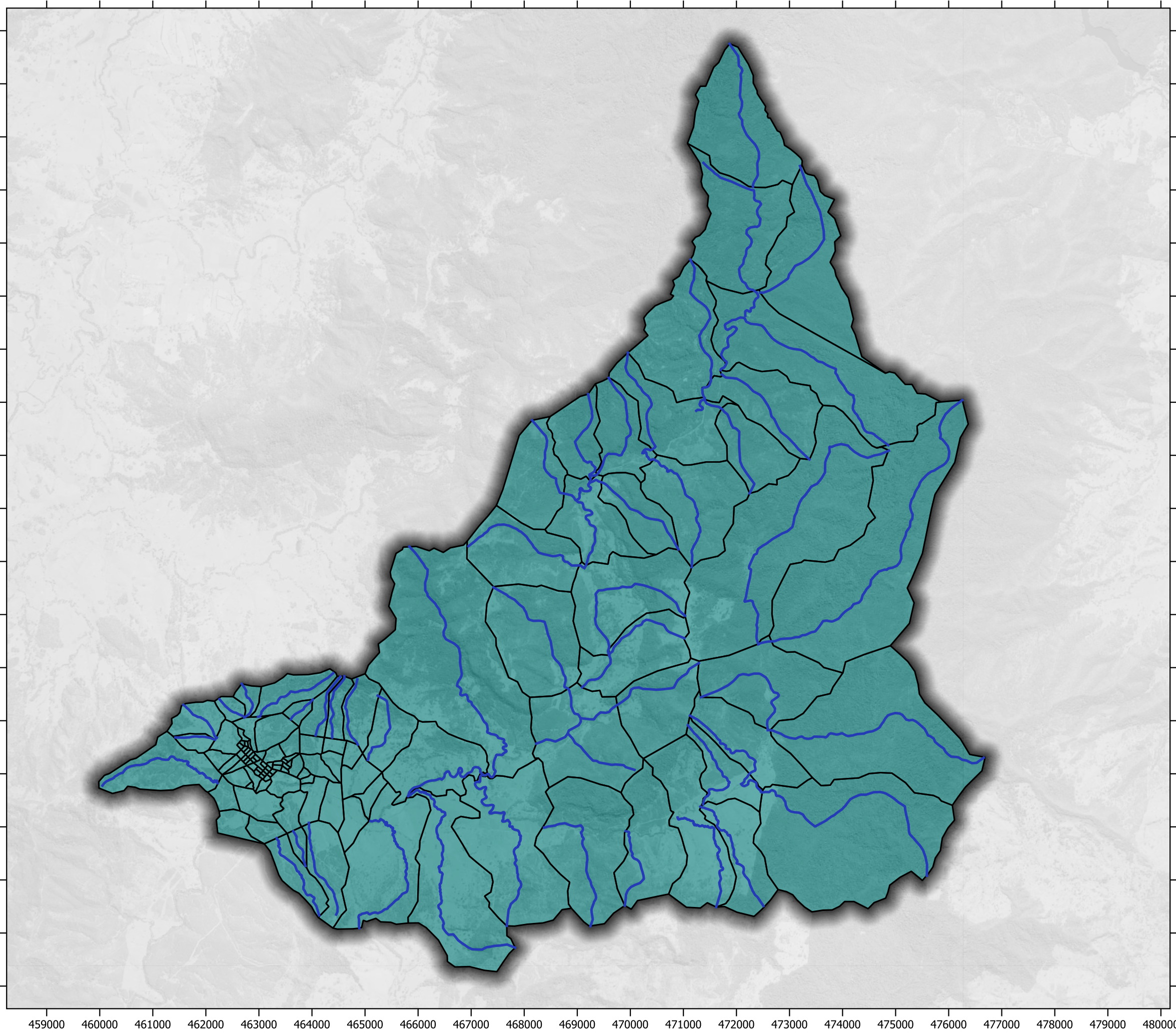
**PUBLIC EXHIBITION DRAFT**

DATUM GDA2020 / MGA zone 56



Disclaimer: This map is current at the time of publication and has been prepared, in part, from unverified data and information (Data) supplied by other parties. Whilst BG&E takes due care in providing its services, BG&E accepts no liability for any loss or damage suffered which is caused by any inaccuracy in the design or drawing which has resulted from the use of any unverified, inaccurate or misleading Data supplied by other parties.

Aerial Imagery Source: SIXmaps

P:\BGE\SYD\S20095\100 Draw\Figures\BO\_FS\_Figures\_Appendix\_A.qgz | Appendix A3



**Legend**

-  Streampaths
-  Sub-catchments

DRAWN: SM  
 REVIEWED: LB  
 APPROVED: LB

DATE: 28/6/2021  
 PROJECT: Bonalbo Flood Study  
 CLIENT: Kyogle Council



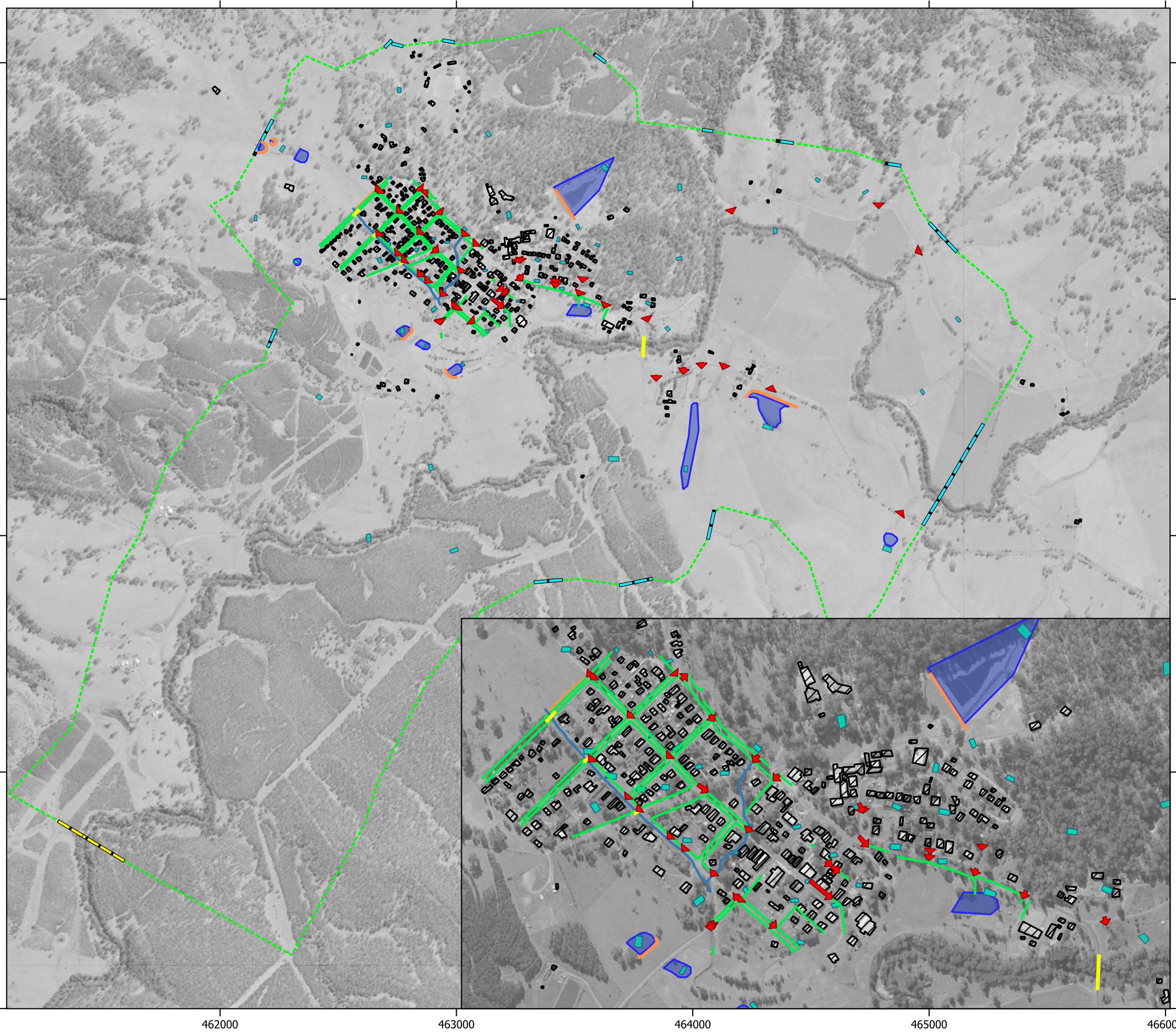
Figure A-4  
 Hydrologic Model Layout

**PUBLIC EXHIBITION DRAFT**

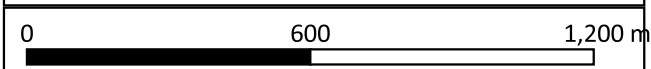
DATUM: GDA2020 / MGA zone 56

Disclaimer: This map is current at the time of publication and has been prepared, in part, from unverified data and information (Data) supplied by other parties. Whilst BG&E takes due care in providing its services, BG&E accepts no liability for any loss or damage suffered which is caused by any inaccuracy in the design or drawing which has resulted from the use of any unverified, inaccurate or misleading Data supplied by other parties.

Aerial Imagery Source: SIXmaps



- ### Legend
- - - Model Extent
  - Buildings
  - Local Catchment Inflows
  - Initial Water Level
  - Stormwater Network (1d features)
  - Exterior Catchment Inflows
  - Bridges (2s Ifcsh)
  - Channels (gully lines)
  - Drains (gully lines)
  - High Break Lines



DRAWN: SM  
 REVIEWED: LB  
 APPROVED: LB

DATE: 28/6/2021  
 PROJECT: Bonalbo Flood Study  
 CLIENT: Kyogle Council



Figure A-5  
 Hydraulic Model Layout

**PUBLIC EXHIBITION DRAFT**

DATUM: GDA2020 / MGA zone 56

Disclaimer: This map is current at the time of publication and has been prepared, in part, from unverified data and information (Data) supplied by other parties. Whilst BG&E takes due care in providing its services, BG&E accepts no liability for any loss or damage suffered which is caused by any inaccuracy in the design or drawing which has resulted from the use of any unverified, inaccurate or misleading Data supplied by other parties.

Aerial Imagery Source: SIXmaps

P:\BGE\SYD\S20095\100 Draw\Figures\BO\_FS\_Figures\_AppendixA\_A.qgz \ Appendix A5