
CORPORATE PROFILE

BG&E Engineering

OPPORTUNITIES
THROUGH
EXCELLENCE

bgeeng.com

BG
&E



**We're an international civil
and structural engineering
consultancy celebrated
for our innovative, award-
winning designs that prioritise
practicality and constructability.**

**BG
&E**

Our Numbers Speak Volumes



Our International Footprint

Our team of over 1100 professionals span Australia, New Zealand (NZ), South East Asia, the United Kingdom (UK) and the Middle East. We deliver high-quality engineering solutions and technical expertise across a range of industry sectors.



*Disaster Recovery Funding Arrangement (DRFA) 22A
Urgent Reconstruction of Essential Assets (REPA) -
Lamington National Park, QLD, Australia.*



Our Story



**We never wanted to be the biggest,
we just wanted to be the best.**



In 1970, three enterprising engineers, Peter Bruechle, Norm Gilchrist and Ernie Evans, established BG&E in Perth, Western Australia (WA).

From the start, we were determined to be pioneers and best-in-class, utilising our technical expertise to solve complex engineering problems.

Our founders proudly established a values-based business. Every day, our decisions, behaviour and actions are guided by shared values. We pursue excellence and challenge norms through efficient, intelligent problem-solving.

Our Purpose & Values

At BG&E, we're united by a common purpose - we believe that truly great engineering takes curiosity, bravery and trust, and is the key to creating extraordinary built environments.

— THE BG&E WAY

The BG&E Way is more than a motto, it's the essence of how we live our purpose. Our proactive, adaptive team collaborates to achieve a common goal. We are always learning and evolving.

The Pursuit of Excellence

Challenging the norm and thinking laterally, solving problems intelligently and efficiently and continuously learning and improving.

One Team

Being proactive, adaptive and working together towards a common goal. Always doing what's best for BG&E and showing respect for others.

Care & Integrity

Building and maintaining relationships based on trust and mutual respect. Putting ourselves in our Client's shoes and being invested in their outcomes, as well as caring for the welfare and development of each and every member of the BG&E family.

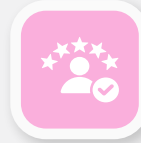


Why BG&E?



CERTAINTY OF DELIVERY

Guaranteed timely delivery through early engagement, focused collaboration, and strong stakeholder relationships.



HIGH CALIBRE EXPERTISE

Industry-leading specialists committed to consistency and excellence from tender to project delivery.



INNOVATIVE ENGINEERING

Bespoke, efficient engineering solutions with a keen eye on constructability and project-specific needs.



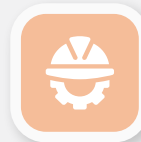
SUSTAINABILITY FOCUSED

Advanced practices including carbon calculation, Greenstar advice, and long-term environmental strategies.



COLLABORATIVE APPROACH

Expertise driven by collaboration with Clients and consultants for enhanced project outcomes.



DIGITAL ENGINEERING PROWESS

Over a decade in cutting-edge Digital Engineering - integrating BIM, GIS, and the latest technologies for optimal results.

*St Mary's Intermodal –
Sydney, NSW, Australia.*



Our Technical Expertise

BG&E's expertise is characterised by technical excellence, innovation and constructability. Working closely with Clients and stakeholders, we deliver world-class technical solutions.



PROJECT LIFECYCLE

This illustrates the lifecycle of a construction project, highlighting eight critical stages and showcasing the progression of a project from start to finish.



BRIDGES

Over the last five decades, BG&E has been at the forefront of bridge design. We introduced the incremental launched bridge methodology to Australia and maintain our leadership in designing simple and complex bridges. Our services encompass planning and feasibility studies, conceptual, schematic and detailed design, construction documentation and on-site support - with a focus on constructability and durability.



CIVIL ENGINEERING

We deliver civil engineering projects of varying scales - from highways, local roads and rail lines to land development, urban civil and public domain spaces. Our expertise combines technical know-how and efficient resource utilisation to deliver sustainable, optimal outcomes. We have extensive experience with a variety of procurement models - both Client-side and for contractors - ensuring we can operate in a range of diverse and often nuanced environments.



CONSTRUCTION ENGINEERING (TEMPORARY WORKS)

From high-rise towers to major infrastructure projects, each presents unique construction challenges. We keep pace with industry standards, safety regulations, and best practice products and methods to ensure our Clients deliver their projects on time and within budget. We design structural and civil temporary works solutions and sequencing advice to support our Clients' construction methodology.



DIGITAL ENGINEERING

BG&E, a leader in digital engineering, has earned a reputation for excellence by consistently advancing systems and workflows. Our ISO19650 certification underscores our commitment to the highest standards in information management for built assets. We simplify the complex by streamlining workflows through integrated design, analysis, and documentation, and employ enhanced collaboration through the effective use of GIS, visualisations and animations.



*Pacific Highway (M1) Pimpama Interchange (Exit 49) -
Gold Coast, QLD, Australia.*



FAÇADES

Internationally recognised for our innovative façade solutions, BG&E Façade Consultants provide pioneering façade design, architectural detailing and engineering, thermal performance, materials science, remediation and recladding solutions. Our team of structural engineers, architects, building physicists and designers seamlessly collaborate to realise beautiful buildings with optimal outcomes for owners, occupants, visitors and tenants alike.



FLOOD MANAGEMENT & HYDROLOGY

We believe that understanding flood risks is key to delivering positive outcomes. Taking a holistic approach, our team of water engineers, flood modellers and hydrologists ensures the delivery of resilient, effective and practicable infrastructure design. Our services encompass surface water and hydrologic investigations, flood modelling and floodplain risk management, integrated water management, and waterway structure and design.



GEOTECHNICAL

We work closely with planners, engineers, and scientists from project inception through to the detailed design and construction in the building, rail, bridge, road, energy and ports sectors. Our services include desk studies, investigation scoping, site formation, slope and foundation design, deep excavation and numerical assessment.



*Avon River Bridge -
Stratford, VIC, Australia.*



MATERIALS & DURABILITY

With strong links to academia and long-standing industry partnerships, our Materials team provides materials selection, specification and optimisation, durability design, design and specification conformance, constructability staging, asset inspection and remaining life assessments. We also offer defect and dilapidation remediation strategies, nondestructive and destructive materials testing, conflict resolution and support related to construction law.



RAIL

Our Rail team delivers rail and rail infrastructure design services for freight, passenger and mining rail, maintenance facilities, and intermodals and yards. With a proven track record, we have successfully collaborated with rail operators, transport authorities, infrastructure developers and Engineering, Procurement & Construction (EPC) contractors to provide innovative and cost-effective design solutions that deliver efficient, safe and sustainable rail networks.



STRUCTURAL ENGINEERING

BG&E is one of Australia's leading structural engineers and has delivered iconic, award-winning projects across the globe - particularly in Australia and the Middle East. We are one of the few structural engineering consultancies that operate across all market sectors. Drawing upon our extensive expertise, BG&E delivers our Clients' visions for a project by working collaboratively with architects and stakeholders. We have a focus on providing constructable structures which we achieve by simplifying designs and embracing innovative approaches.



SUSTAINABILITY

One of the most significant enhancements of sustainability in construction is achieved through good design. This encompasses integrating sustainability goals as a fundamental aspect of the design process from the project's outset, where the greatest impact can be achieved. Using a systems-based approach, BG&E looks at the wider context for each project and considers the long term. This holistic framework enables informed decision-making on pathways to improve outcomes that are not possible using more traditional approaches.



TIMBER

Through a strategic merger with Timber Design Studio, BG&E's Timber team combines our engineering excellence with Timber Design Studio's unparalleled expertise in mass timber construction and materials science that is not found outside Europe. Our services include structural and building physics engineering, manufacturing design, facade and fire engineering, procurement, project management, and cost planning.

*Mandurah Bridge -
Mandurah, WA, Australia.*





TRAFFIC ENGINEERING & TRANSPORT PLANNING

Traffic engineering and transport planning considerations are fundamental to project development. In collaboration with our Clients, we guide decisions in urban and regional transportation planning, growth management, and the establishment and maintenance of civic infrastructure. Our services also encompass transport infrastructure investment, traffic modelling and engineering, traffic management strategy and road safety.



WATER INFRASTRUCTURE

BG&E has recently contributed to some of Australia's largest water infrastructure projects. Through our involvement, we have further developed efficient and effective design practices that reduce Capital Expenditure (CapEX) and ensure timely delivery. Our experience extends from planning to commissioning across a spectrum of projects - including designing new facilities, modernising, and rehabilitating existing structures, or extending networks.

*Smithfield-Bypass -
Cairns, QLD, Australia.*



Our Market Sectors



Adaptive Reuse



Aged Care



Arts & Culture



Aviation



Commercial & Office



Data Centres & Mission Critical Facilities



Defence



Education



Entertainment & Leisure



Healthcare



Heritage & Refurbishment



Hotels & Accommodation



Mixed-Use



Ports & Marine



Rail, Stations & Over Rail



Renewables & Energy



Residential



Roads, Bridges & Tunnels



Sports, Stadia & Recreation



Transit Oriented Development

Environmental, Social & Governance (ESG)

Thoughtfully determined Environmental, Social and Governance (ESG) objectives are the framework for BG&E to effectively manage our impact on the environment and society while ensuring robust governance practices.

Embracing ESG principles is crucial for our company as it aligns our commitment to responsible business practices, enhances long-term sustainability, fosters stakeholder trust, and positions us as a socially conscious and ethically driven organisation in today's dynamic business landscape.

The ESG Committee charter aligns with our purpose, while our 2021-25 Strategic Plan ensures the delivery of value for Clients, technical excellence, compliant operations, shareholder value, brand recognition, employee opportunities, sustainable communities and social equity.

We have an ESG Committee that oversees company-wide improvements, compliance and transparency, guided by a three-part scope of responsibilities - Environmental, Social and Governance.



As we address the global impacts of climate change, we align our actions with specific United Nations Sustainable Development Goals.

Environmental

BG&E has the responsibility and opportunity to make a sustainable difference, which we integrate into our everyday operations, corporate culture and international strategy.

INTERNAL ACTIONS

BG&E is dedicated to minimising the impact of our operations, moving beyond business-as-usual to accelerate our efforts in responding to the rapidly evolving climate crisis, societal changes, technological advances and natural resource constraints.

We drive business-wide improvements, compliance and transparency to achieve this transition in the pursuit of promoting human wellbeing, equality and a regenerative approach.

Our internal initiatives to reduce carbon emissions include:

- Understanding our corporate carbon footprint, including Scope 1, 2, and 3 emissions, to identify effective measures and targets for reduction.
- Researching options for the implementation of LED lights in all offices.
- Gifting keep cups to employees to reduce use of single-use cups.
- Implementing digital processes to transition to a paperless office environment.
- Provision of recycling bins in communal office spaces to promote recycling.
- Educating employees on corporate carbon emissions.
- Establishing an internal reward and recognition programme for sustainability innovations.
- Reviewing our electricity contracts to explore the purchase of renewable energy sources, thereby directly reducing our Scope 2 emissions.
- Sustainable procurement – choosing suppliers with strong environmental credentials and prioritising locally sourced materials to minimise transport emissions.

— EXTERNAL ACTIONS

In an industry where technology for decarbonising is still in the early stages, there's much to do and we're committed to playing our part.

As an engineering consultancy, BG&E leverages our technical command to identify strategic risks and opportunities related to climate change, carbon emissions and social and environmental project legacies.

We recognise the uniqueness of each project and the value of taking a customised and proactive approach to integrating Net Zero and regenerative development initiatives from the early planning, feasibility and concept design stages.

Our external actions, in partnership with Clients and stakeholders, to support the transition to Net Zero include:

- Materials and embodied energy considerations to guide future ESG initiatives and targets.
- Performing early-stage carbon calculations to inform the identification of improvement opportunities.
- Assessing embodied carbon in designs against benchmark ratings.
- Contributing to achieving sustainability rating schemes across geographies and sectors.
- Exploring alternative material solutions and maximising material and energy efficiency.
- Prioritising environmentally sustainable design practices like recycling, waste reduction, durability, adaptive design, and water-sensitive urban planning.
- Maintaining industry memberships to contribute to the development of sustainability tools and ratings, including the Infrastructure Sustainability Council (ISC).
- Contributing to the scientific and engineering research for the concrete industry with a formalised partnership with SmartCrete Cooperative Research Centres (CRC).

Increased Support for Communities After Extreme Weather Events, Winning More Emergency Disaster Reconstruction Projects



Pursued Innovation in Material Design, Procurement & Digital Twin Technology



Began Charting A Roadmap to Reduce our Whole Lifecycle Carbon



Continued Helping Clients to Achieve Their Net Zero Ambitions via Reducing Embodied, Operational & Whole Life Carbon



Social

BG&E and its people have been actively involved in engaging with local communities and supporting social causes in the countries we operate in. However, in the last decade, we have significantly increased our efforts to formalise and accelerate our social obligations.



— COMMUNITY ENGAGEMENT

Worldwide, our teams strive to make a positive impact in the communities where we live and work – fostering strong local partnerships and supporting charities, grassroots programs and STEM initiatives that align with our shared values.

Some social initiatives include:

- Donating computers to schools in local schools.
- Supporting the Indigenous Australian Engineering Summer School Program in Western Australia.
- Active participation in STEM programs for tertiary students globally.
- Support of the podcast 'You Don't Look Like an Engineer' - a production by a BG&E employee that champions diversity in engineering.
- Fundraising Bake Offs, with funds raised donated to Oz Harvest.
- Support of the social enterprise - Fruit2Work - a registered charity that delivers goods to our Gold Coast office.



After over 50 years, BG&E remains an employee-owned engineering consultancy, fostering a ‘people-first’ culture and promoting a fair, enjoyable and inclusive work environment. Achieving diversity, equity and inclusion demands a sustained commitment and we hold ourselves accountable for ongoing progress.

— DIVERSITY, EQUITY & INCLUSION

Diversity & Inclusion

We embrace differences and encourage employees to be their authentic selves at work. In our community, difference means amplifying diverse voices, embracing varying opinions and fostering change discussions. It also involves aligning actions with our values and culture.

The results of our annual employee engagement survey consistently confirm a culture of respect and collaboration. Employees report effective teamwork and feel genuinely cared for by managers and colleagues. This individual consideration applies to all employees, regardless of their background.

Gender Equality

Addressing gender disparities is a continuous effort in our industry, particularly regarding gender participation. We acknowledge that our current gender representation is below the level seen in similar organisations.

To foster inclusivity and close this gap, we’ve established a Gender and Diversity Strategy. This strategy aims to attract more women to join BG&E, and empower our current employees to reach their potential, nurturing the next generation of female leaders from within our company.



*Sydney Gateway -
Sydney, NSW, Australia.*

— HEALTH, SAFETY & WELLBEING

We acknowledge our shared responsibility for the health, safety and wellbeing of our employees, supply chain, Clients, subcontractors, stakeholders, visitors and the local communities where we operate.

Led by our Health, Safety, Environment and Quality (HSEQ) Committee, we are guided by an Integrated HSEQ Management System Framework foundation that centres on the following internal and external requirements:

- Adhering to international standards, legal obligations, stakeholder expectations and supply chain impact.
- Monitoring management system process and operational delivery through programs including inspections and internal audits.
- Routinely reviewing and analysing resources for mandatory training.
- Proactively identifying workplace risks and opportunities, led by Senior Management.
- Distributing monthly HSEQ consultative packs company wide.
- Proactively conducting psychosocial hazard risk assessments that lead to initiatives like flexible work arrangements.
- Offering a complimentary Employee Assistance Program for mental health and wellbeing.
- Providing additional employee health benefits, e.g. flu vaccination programs.



*Lumina -
Sydney, NSW, Australia.*

— HUMAN RIGHTS & ETHICAL SUPPLY CHAIN

As BG&E's business is a professional services organisation, the risks of human rights violations occurring within our workforce are considered low. However, we acknowledge there may be risks of established modern slavery practices within our global supply chains, and we therefore take appropriate action to mitigate these risks.

BG&E produces an annual Modern Slavery Act Statement that reflects our opposition to violations of an individual's dignity and human rights in all forms. This Statement sets BG&E's objectives for identifying and, if necessary, removing risks of modern slavery in its operations, including assessment of Clients and subcontractors, transparent contracting arrangements, monitoring of recruitment processes and providing annual compliance training to staff.

Subcontractors, third-party providers, or independent consultants must engage in our pre-screening process, providing evidence to meet minimum standards and requirements in health, safety, environment, and quality management systems. Additionally, we are committed to ensuring that all suppliers, including sub-consultants, comply with Modern Slavery laws.

Our Code of Business Conduct also outlines our expectations for suppliers, sub-consultants, business partners, and other third parties regarding critical issues such as health and safety, compliance, human rights, environmental responsibility, and reporting. We may refrain from working with suppliers who do not meet these standards.

— INDIGENOUS PARTICIPATION

Currently, BG&E's Indigenous reconciliation and participation efforts are focused within Australia. We have a formalised Reconciliation Action Plan (RAP) which encourages opportunities to improve the lives of Aboriginal and Torres Strait Islander Peoples. Our focus is directed towards education and employment pathways, as well as to procurement practices, as these sustain economic development in Indigenous communities.

We recognise that the journey of reconciliation is not limited to a handful of days or weeks during the year, but rather to an ongoing appreciation of Australia's Indigenous heritage and a commitment to incremental change every day.

In addition to the objectives outlined in our RAP, we also engage in other reconciliation initiatives, including supporting Aboriginal and Torres Strait Islander students at Sevenoaks Senior College in Western Australia through scholarships, workplace learning and site visits; collaborating with Koolark at North Metropolitan TAFE to fund courses, offer drafter traineeships and provide guest speakers and construction site tours; and partnership with LaTrobe University (VIC) to sponsor RISE, a program that provides STEM workshops and engineering scholarships for Indigenous students.

— TRAINING & DEVELOPMENT

Technical excellence forms the bedrock of our company. We continually add to our talent and capability programs to help build stronger career and learning pathways for our valued team. Our collective wisdom and expertise set us apart, fostering the proactive pursuit of ongoing professional development through in-house sessions, knowledge sharing and external programs.

We collaborate with professional associations like Engineers Australia and the Institution of Civil Engineers in the UK to support our employees to become Chartered professionals. This includes participation in the Engineers Australia workforce credentialing program.



Reconciliation Week 2023 - WA, Australia.

Governance

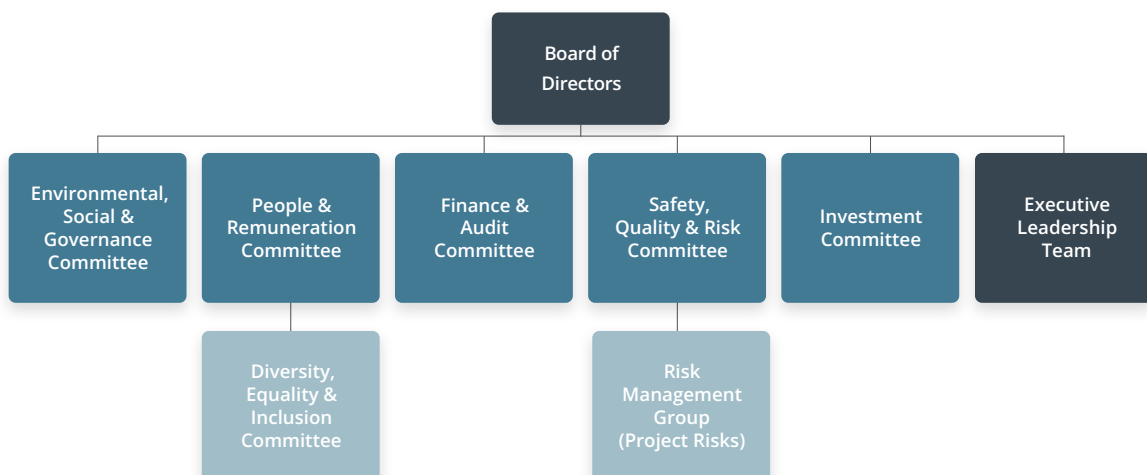
Strong and transparent corporate governance practices are crucial to the success of BG&E's operations. Our corporate governance guidelines reflect our dedication to these practices.

OUR BOARD OF DIRECTORS, EXECUTIVE LEADERSHIP TEAM & COMMITTEES

Our Board of Directors play a crucial role in guiding our company toward socially and ethically responsible practices through the establishment of policies concerning Diversity, Equity and Inclusion, Corporate Social Responsibility, Community Engagement, Modern Slavery, Health and Safety and a host of other initiatives regarding the respect and care of our people.

Additionally, the Board monitors our performance in these areas and ensures that management remains accountable for achieving set goals. BG&E's Board has five direct Subcommittees that assist and advise in decision-making and risk management.

The Executive Leadership Team (ELT) implement the strategies and policies set by the Board. They are responsible for managing day-to-day operations and ensuring alignment with the Board's vision, as well as providing regular updates to the Board on performance.





*Air NZ Hangar 4 -
Auckland, NZ.*

— ETHICAL BEHAVIOUR & RESPONSIBLE BUSINESS CONDUCT

BG&E is dedicated to conducting business with the highest ethical standards, firmly prohibiting all forms of bribery and corruption. Our commitment to integrity ensures that all our operations are conducted transparently, responsibly, and in full compliance with relevant laws and regulations. We strive to maintain a culture of ethical conduct and accountability across all levels of the organisation.

Anti-bribery & Corruption Policy

Our policy is designed to ensure compliance with all anti-bribery and corruption laws and regulations relevant to our operations and businesses, conduct business in a socially responsible manner while upholding the highest standards of fairness, honesty, and integrity in all our activities, and provide our employees, directors, officers and contractors with the tools and support needed to identify and combat bribery and corruption risks. This commitment underscores our dedication to responsible business conduct and ethical behaviour.

Whistleblower Policy

The company fosters a culture of transparency and encourages the reporting of any breaches of misconduct or other concerns. Our Whistleblower Policy ensures that anyone with reasonable grounds to suspect potential misconduct within or against BG&E can make a report without fear of reprisal.

To further support our culture of integrity, BG&E offers online training focused on Discrimination, Anti-Bullying and Anti-Harassment, and Whistleblower Protection.



*One Za'abeel -
Dubai, United Arab Emirates.*

— RISK MANAGEMENT OVERSIGHT

BG&E operates within uncertain markets and industries, requiring staff and projects to make daily risk-based decisions. Recognising that risk taking is a necessary activity, we implement risk management to effectively expect, understand and manage uncertainty effectively - providing resilience and confidence across the organisation.

Risk Management Frameworks

To achieve desirable outcomes, BG&E integrates several management strategies into our business activities - including global standards, procedures, review processes, management plans, authority limits, codes of conduct, safety systems, checklists, and reporting processes.

Effective Risk Management frameworks transition into operational levels of the organisation and involve collaboration with relevant stakeholder groups and interested parties through initial risk and opportunity assessments involving Senior Management, regularly scheduled risk workshops, operational work methodology assessments and design reviews.

Risk Appetite

Risk appetite reflects the level of uncertainty an organisation is comfortable with as it works towards its strategic objectives. BG&E's Board has established a comprehensive Risk Management Framework and defined its Risk Appetite across strategy, financial performance, people, operations and governance.

To ensure adherence to this Risk Appetite, the Board has created the Safety, Quality, and Risk Committee (SQRC), which provides oversight and ensures that operations align with risk parameters. Supporting the SQRC, the Risk Management Group (RMG) acts as a sub-committee, aiding in the effective execution of these responsibilities.

— COMPLIANCE & POLICY

Our commitment to integrity and accountability is integral to our continued success. BG&E complies with its legislative obligations and uphold legal and ethical standards by:

- Maintaining policies that address legal requirements and satisfy ethical standards, and
- Providing continual internal education and training via its online courses.

— MANAGEMENT SYSTEMS

Our strong commitment to our management systems is one of the principal drivers of the provision of quality advice, design and documentation to our Clients. BG&E maintains and implements independently audited management systems.

Global Standards

- ISO 9001:2015 - Quality Management Systems (QMS)
- ISO 14001:2015 - Environmental Management Systems (EMS)
- ISO 45001:2018 - Occupational Health and Safety Management Systems
- ISO 19650:2018 - Organisation and digitalisation of information about buildings and civil engineering works, including Building Information Modelling

UK

- RISQS Accreditation
- Cyber Essential Certificate



*Fitzroy River Bridge -
Kimberly Region, WA, Australia.*

Award-Winning Projects

BG&E thrives on technical excellence, fuelling our team's collaborative spirit and driving us to create and execute exceptional projects on an international scale. Our internationally acclaimed engineering designs reflect our dedication to diverse fields. Here's a snapshot of some of our recent achievements:

2024

Client Choice Awards

- BG&E: Best provider of ESG Services - Built & Natural Environment Consulting – **Winner**

Consult Australia Awards for Excellence

- Pakenham Roads Upgrade, Princes Freeway Interchanges, Stage 1: Client Service Excellence Award - **Winner**

Australian Steel Institute - Steel Sustainability Awards

- Fitzroy River Bridge: Large Projects \$10 million and above - **Highly Commended**

Western Australian Civil Construction Industry and Training Awards 2024 - Sustainability Achievement Award

- The Tonkin Gap Alliance (TGA), comprising Main Roads, Public Transport Authority, Georgiou, BMD, WA Limestone, BG&E, and GHD – **Winner**

Western Australian Civil Construction Industry and Training Awards 2024 - Aboriginal Engagement Award

- The Fitzroy Bridge Alliance (FBA), comprising BMD Constructions, Georgiou, BG&E, and Main Roads Western Australia – **Winner**

2023 National Excellence in Building and Construction Awards – National Education Facility Award

- Fortitude Valley State Secondary College – **Winner**

2023

Client Choice Awards

- BG&E: Best Provider to Construction & Infrastructure - **Finalist**
- BG&E: Most Innovative Built & Natural Environment Consulting Firm - **Finalist**



Hunter Expressway Flyover -
Branxton, NSW, Australia.

Concrete Institute Australia (CIA) Awards for Excellence in Concrete

- One the Esplanade: Award for Excellence - Commercial Buildings - **Winner**
- QQT: Award for Excellence - Repair, Restoration and Retrofitting - **Winner**
- QQT: Kevin Cavanagh Trophy for Excellence in Concrete - **Winner**

Council on Tall Buildings and Urban Habitat Conference (CTBUH) Awards

- QQT: Award of Excellence - Structure - **Winner**
- QQT: Award of Excellence - Construction - **Winner**
- QQT: Award of Excellence - Best Tall Building 200-299 metres - **Winner**
- QQT: Award of Excellence - Best Tall Building Oceania - **Winner**
- QQT: Award of Excellence - Repositioning - **Winner**
- QQT: Award of Excellence - Systems - **Winner**
- QQT: Award of Excellence - Space Within - **Winner**

Infrastructure Sustainability Council Annual Gala Awards

- East Link WA: Excellence in Governance - **Finalist**

International Association for Bridge and Structural Engineers (IABSE) Awards

- QQT: Rehabilitation Category - **Winner**
- QQT: Gold Star Award - **Winner**

MIPIM Awards

- QQT: Most Innovative Built & Natural Environment Consulting Firm - **Winner**

The Institution of Structural Engineers Awards

- Paper of Merit Related to Bridge - Incrementally Launched Ramp for SAAR Interchange, Bahrain (Authors: Francesco Presta, Joe Turner and Kashif Rasheed): Husband Prize - **Winner**

2022

Australian Construction Achievement Award

- Sydney Metro City and South West Tunnel and Station Excavation Works: Australian Construction Achievement Award (BG&E and Arcadis Joint Venture) - **Winner**

Australian Steel Institute (ASI) Australian Steel Excellence Awards

- Allianz Stadium: National Winner for Buildings - Large Project - **Winner**

Council on Tall Buildings and Urban Habitat Conference (CTBUH) Awards

- Olderfleet: Best Tall Building - 100-199 metres - **Winner**

At BG&E, we are united by a common purpose – we believe that truly great engineering takes curiosity, bravery and trust, and is the key to creating extraordinary built environments.

Our team of more than 1100 highly skilled people, in offices across Australia, New Zealand, Singapore, the United Kingdom and Middle East, design and deliver engineering solutions for Clients in the Property, Transport, Ports and Marine, Water, Defence, Energy and Resources sectors.

**OPPORTUNITIES
THROUGH
EXCELLENCE**

bgeeng.com

**BG
&E**

COR_BR_R3_P0824