

# FIGURES

Figure A 1: Catchment Plan - Tooloom and Boomi Creeks

Figure A 2: Topographic Plan - Tooloom and Boomi Creeks

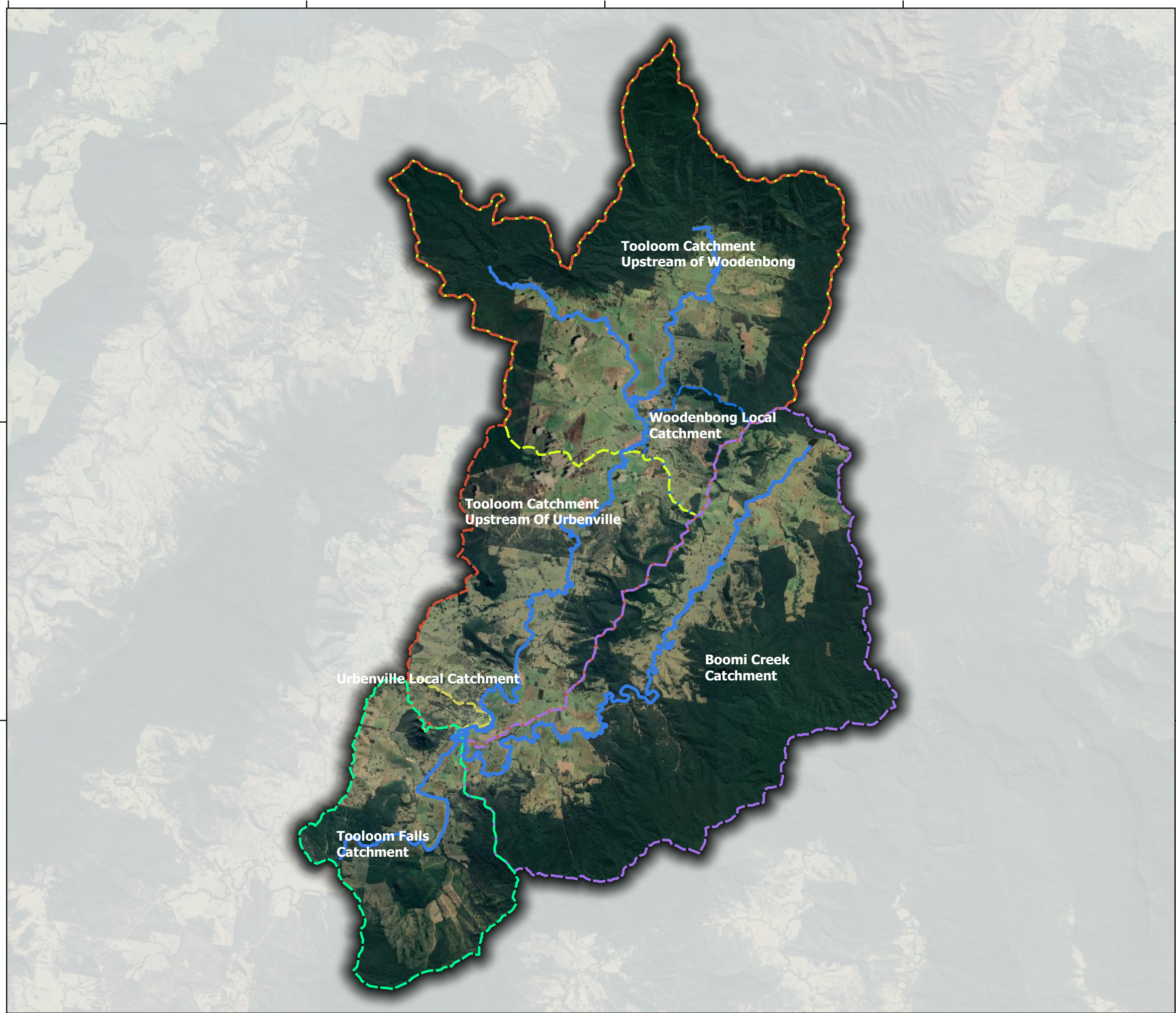
Figure A 3: Rainfall Gauges

Figure A 4: Hydrology Model Layout

Figure A 5: Hydraulic Model Layout - Tooloom and Boomi Creeks

Figure A 6: Hydraulic Model Layout - Urbenville

Figure A 7: Hydraulic Model Layout - Woodenbong



## Legend

### Catchments

- Boomi Creek
- Tooloom Creek Upstream of Woodenbong
- Urbenville local Catchment
- Tooloom Creek Upstream of Urbenville
- Woodenbong Local Catchment
- Tooloom Creek Upstream of Falls

0 2.5 5 km

DRAWN: SM  
REVIEWED: SM  
APPROVED: LB

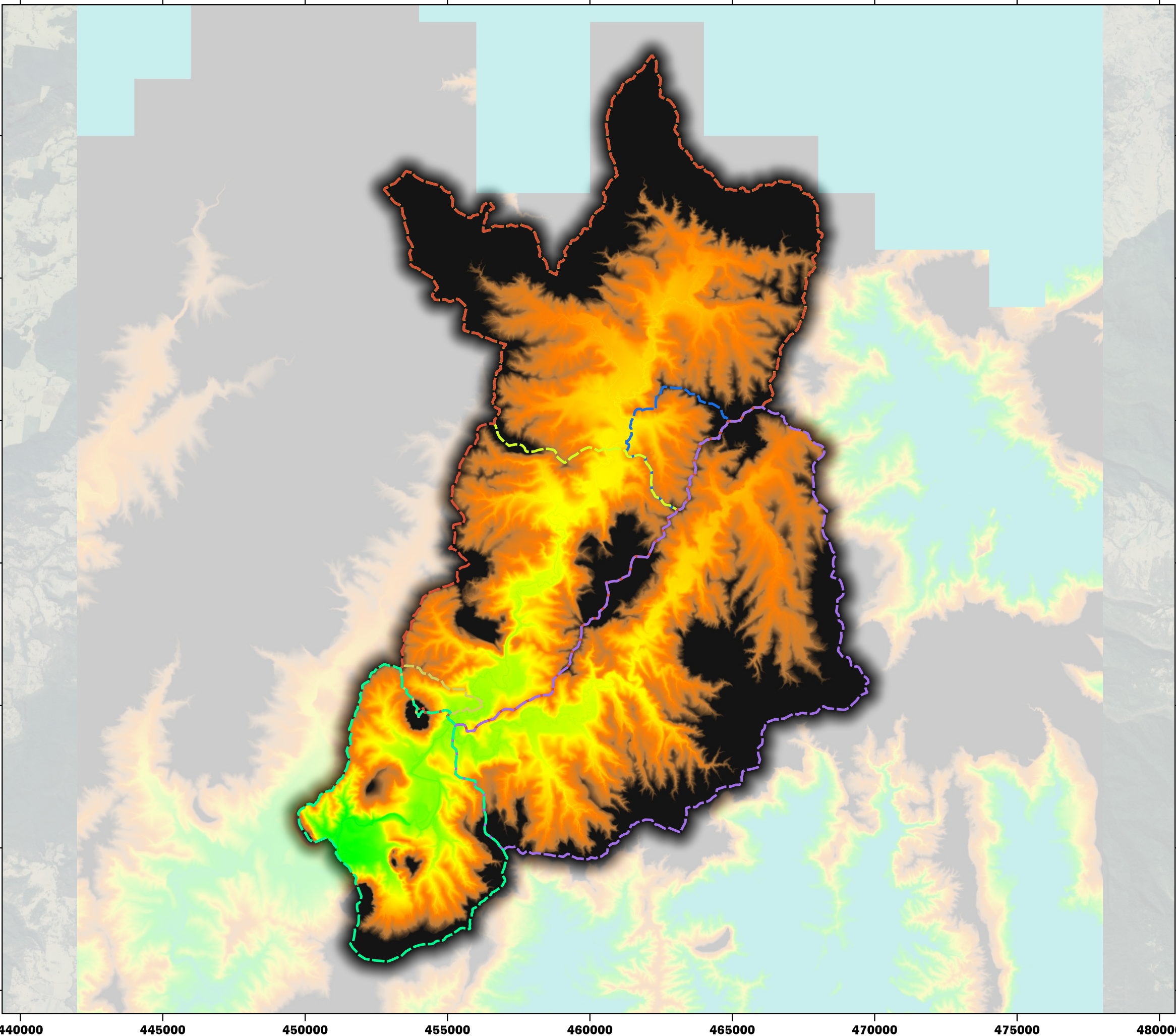
DATE: 31/08/2021  
PROJECT: Urbenville and Woodenbong Flood Study  
CLIENT: Tenterfield and Kyogle Council



Figure A 1 – Catchment Plan Tooloom and Boomi Creeks

**PUBLIC EXHIBITION REPORT**

DATUM: GDA2020 / MGA zone 56

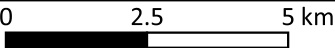


**Legend**

- CatchmentOutline
- Boomi Creek
  - Tooloom Creek Upstream of Woodenbong
  - Urbenville local Catchment
  - Tooloom Creek Upstream of Urbenville
  - Woodenbong Local Catchment
  - Tooloom Creek Upstream of Falls

Elevation (m AHD)

- 300
- 340
- 380
- 420
- 460
- 500



DRAWN: SM  
REVIEWED: SM  
APPROVED: LB



DATE: 13/09/2021  
PROJECT: Urbenville and Woodenbong Flood Study  
CLIENT: Tenterfield and Kyogle Council

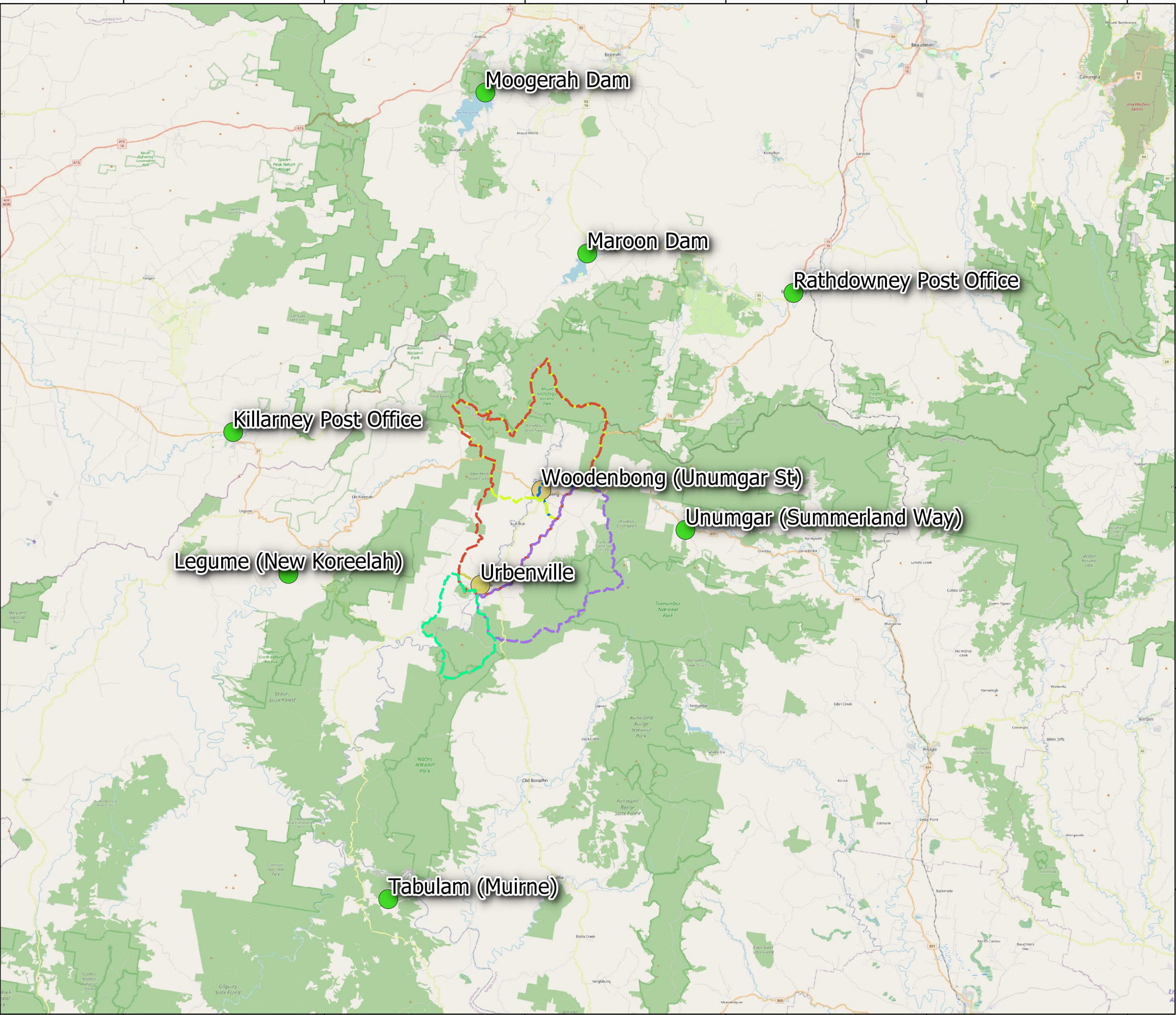
Figure A 2 – Topographic Plan

**PUBLIC EXHIBITION REPORT**

DATUM: GDA2020 / MGA zone 56

Disclaimer: This map is current at the time of publication and has been prepared, in part, from unverified data and information (Data) supplied by other parties. Whilst BG&E takes due care in providing its services, BG&E accepts no liability for any loss or damage suffered which is caused by any inaccuracy in the design or drawing which has resulted from the use of any unverified, inaccurate or misleading Data supplied by other parties.  
P:\BGESYD\S20128\100 Draw\QGIS\Mapping\_Appendix\_A\_C.qgz \ [% "QGISTheme"%]

Aerial Imagery Source: SIXmaps



**Legend**

- Catchments
- Boomi Creek
  - Tooloom Creek Upstream of Woodenbong
  - Urbenville local Catchment
  - Tooloom Creek Upstream of Urbenville
  - Woodenbong Local Catchment
  - Tooloom Creek Upstream of Falls
- Rainfall Gauges
- Pluviograph
  - Daily Rainfall

0 10 20 km

DRAWN: SM  
REVIEWED: SM  
APPROVED: LB

DATE: 31/08/2021  
PROJECT: Urbenville and Woodenbong Flood Study  
CLIENT: Tenterfield and Kyogle Council



Figure A 3 – Rainfall Gauges

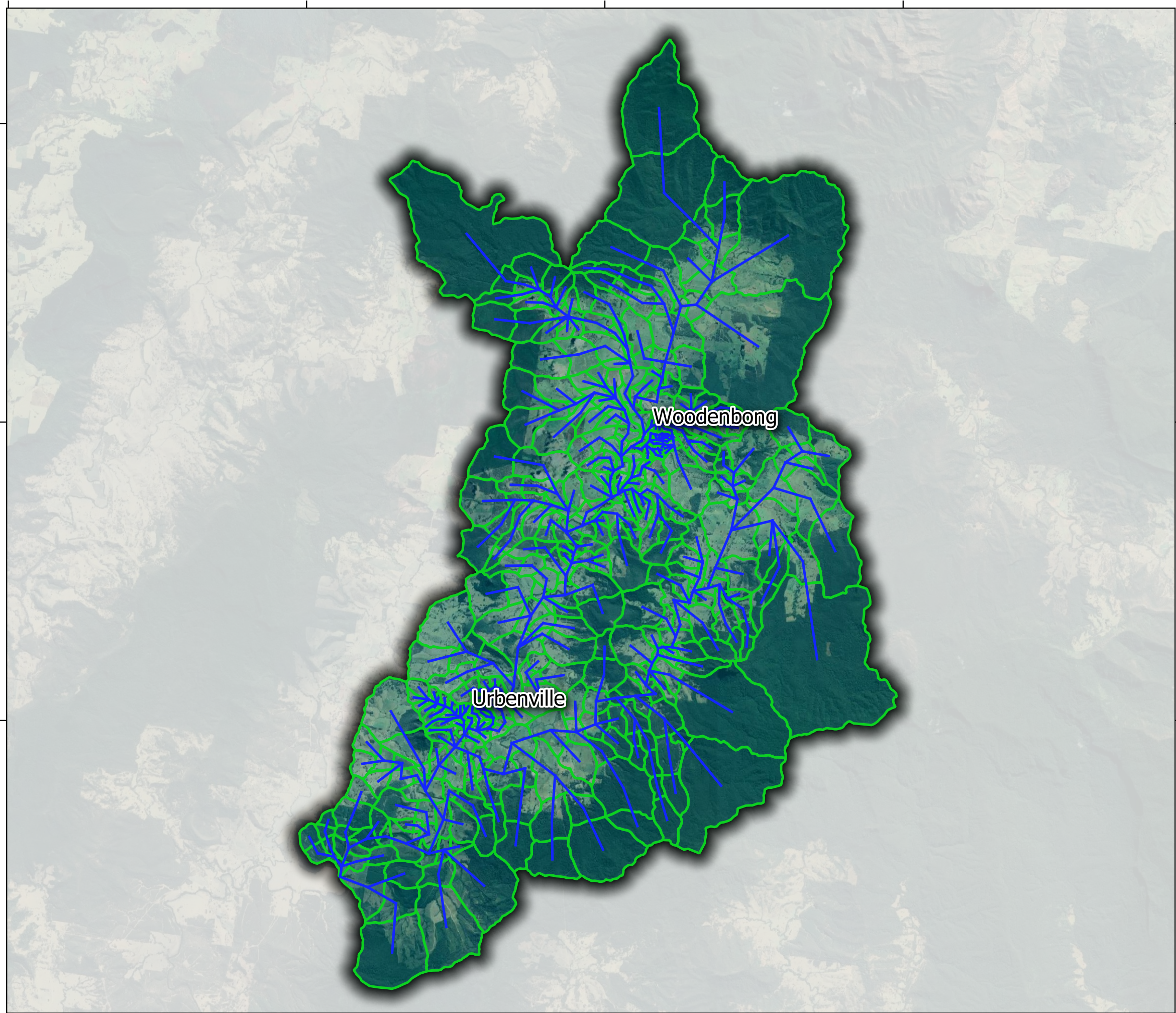
**PUBLIC EXHIBITION REPORT**

DATUM GDA2020 / MGA zone 56



Disclaimer: This map is current at the time of publication and has been prepared, in part, from unverified data and information (Data) supplied by other parties. Whilst BG&E takes due care in providing its services, BG&E accepts no liability for any loss or damage suffered which is caused by any inaccuracy in the design or drawing which has resulted from the use of any unverified, inaccurate or misleading Data supplied by other parties.

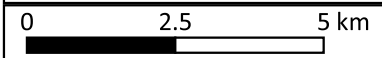
P:\BGE\SYD\S20128\100 Draw\QGIS\Mapping\_Appendix\_A\_C.qgz \ [% "QGISTheme"%]

Aerial Imagery Source: SIXmaps



**Legend**

-  Sub-catchments
-  Streampaths



DRAWN: SM  
REVIEWED: SM  
APPROVED: LB



DATE: 31/08/2021  
PROJECT: Urbenville and Woodenbong Flood Study  
CLIENT: Tenterfield and Kyogle Council

Figure A 4 – Hydrological Model Layout

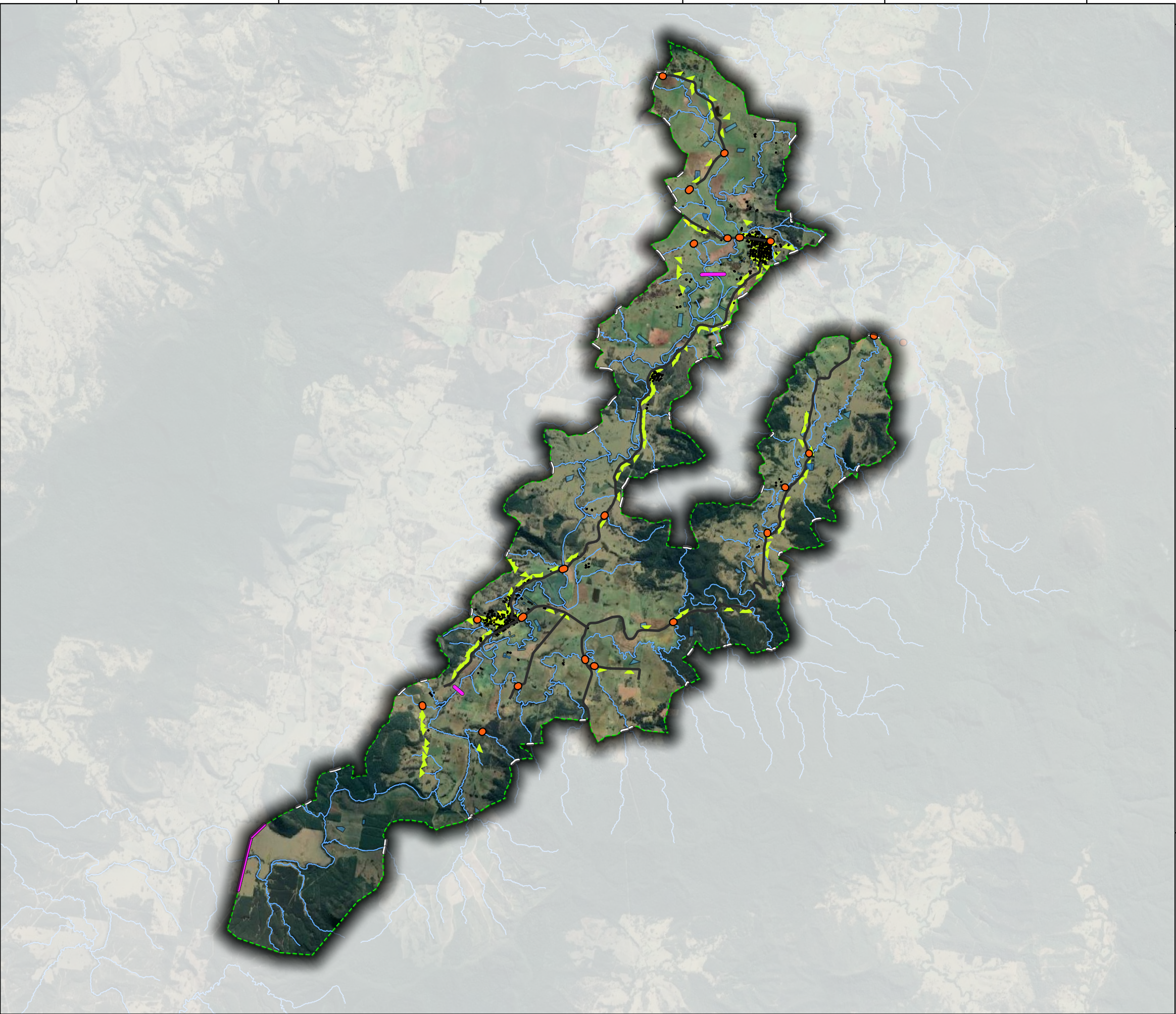
**PUBLIC EXHIBITION REPORT**

DATUM GDA2020 / MGA zone 56

440000 450000 460000 470000

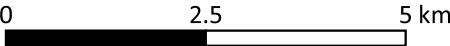
Disclaimer: This map is current at the time of publication and has been prepared, in part, from unverified data and information (Data) supplied by other parties. Whilst BG&E takes due care in providing its services, BG&E accepts no liability for any loss or damage suffered which is caused by any inaccuracy in the design or drawing which has resulted from the use of any unverified, inaccurate or misleading Data supplied by other parties.  
P:\BGE\SYD\S20128\100 Draw\QGIS\Mapping\_Appendix\_A\_C.qgz \ [% "QGISTheme"%]

Aerial Imagery Source: SIXmaps



**Legend**

- Buildings
- Model Extent
- Initial Water Level
- Bridges (2d\_lfcsh)
- Local Catchment Flows
- External Flows
- Roads (ridge lines)
- Creeks (gully lines)
- Downstream Boundary
- Stormwater Network
  - 1d featuers



DRAWN: SM  
REVIEWED: SM  
APPROVED: LB

DATE: 31/08/2021  
PROJECT: Urbenville and Woodenbong Flood Study  
CLIENT: Tenterfield and Kyogle Council


 

Figure A 5 – Tooloom Creek Hydraulic Model Layout

**PUBLIC EXHIBITION REPORT**

DATUM: GDA2020 / MGA zone 56

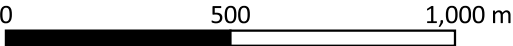
Disclaimer: This map is current at the time of publication and has been prepared, in part, from unverified data and information (Data) supplied by other parties. Whilst BG&E takes due care in providing its services, BG&E accepts no liability for any loss or damage suffered which is caused by any inaccuracy in the design or drawing which has resulted from the use of any unverified, inaccurate or misleading Data supplied by other parties.

Aerial Imagery Source: SIXmaps



Legend

- Buildings
- Model Extent
- Initial Water Level
- Bridges (2d\_lfcsh)
- Local Catchment Flows
- External Flows
- Roads (ridge lines)
- Creeks (gully lines)
- Downstream Boundary
- Stormwater Network
- 1d featuers



DRAWN: SM  
REVIEWED: SM  
APPROVED: LB

DATE: 31/08/2021  
PROJECT: Urbenville and Woodenbong Flood Study  
CLIENT: Tenterfield and Kyogle Council



Figure A 6 – Urbenville Hydraulic Model Layout

PUBLIC EXHIBITION REPORT

DATUM GDA2020 / MGA zone 56

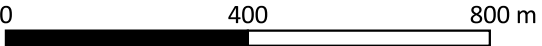
Disclaimer: This map is current at the time of publication and has been prepared, in part, from unverified data and information (Data) supplied by other parties. Whilst BG&E takes due care in providing its services, BG&E accepts no liability for any loss or damage suffered which is caused by any inaccuracy in the design or drawing which has resulted from the use of any unverified, inaccurate or misleading Data supplied by other parties.  
P:\BGE\SYD\S20128\100 Draw\QGIS\Mapping\_Appendix\_A\_C.qgz \ [% "QGISTheme"%]

Aerial Imagery Source: SIXmaps



Legend

- Buildings
- Model Extent
- Initial Water Level
- Bridges (2d\_lfcsh)
- Local Catchment Flows
- External Flows
- Roads (ridge lines)
- Creeks (gully lines)
- Downstream Boundary
- Stormwater Network
- 1d featuers



DRAWN: SM  
REVIEWED: SM  
APPROVED: LB

DATE: 31/08/2021  
PROJECT: Urbenville and Woodenbong Flood Study  
CLIENT: Tenterfield and Kyogle Council




Figure A 7 – Woodenbong Hydraulic Model Layout

PUBLIC EXHIBITION REPORT

DATUM GDA2020 / MGA zone 56